

# LMP Series Mechanical Dock Leveler



**25K - 40K**  
CIR

**6' - 7'**  
WIDTH

**6' - 8'**  
LENGTH

## FEATURES

- 11-tooth hold-down/float assembly
- Cam control counter balance assembly
- Grease fittings
- Lip drive positive lip extension
- Lip-supporting service strut
- Multiple position safety stop
- Working-range toe guards
- Yieldable lip plate
- Below dock end loading capability
- CleanSweep frame design
- Four-sided box construction deck assembly
- Lockout/tagout maintenance strut
- Night locks/cross traffic support
- Design and manufactured in the USA

Connect online  
with

**myQ**  
Enterprise

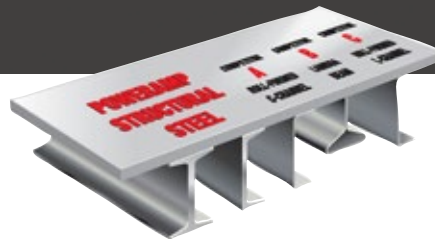
*\* LMP Series 7'x8' 35,000 CIR shown with  
CleanSweep frame and optional full-range toe  
guards and below dock control.*

# LMP Series Mechanical Dock Leveler

25K - 40K  
CIR

6' - 7'  
WIDTH

6' - 8'  
LENGTH



## OPERATION

The Poweramp LMP Series leveler is operated manually simply by pulling the release chain to raise the leveler and automatically extend the lip. The attendant walks the platform down onto the trailer bed. The standard lip is 16", with an operating range of 12" above and below dock level. The platform is designed to compensate for canted truck beds up to 4" and remain flush with the dock floor.

## SAFETY FEATURES

- Dual pivoting cross traffic legs for multi position safety in the event of early departure
- Built-in lockout/tagout maintenance inspection strut
- Working range toe guards close off sides at the highest position
- Lip keepers for cross traffic support and automatic night lock security against theft



Cam Control Counter Balance Assembly permits smooth ramp extension and easy walk-down of the leveler.

## VEHICLE RESTRAINTS & ACCESSORIES

For enhanced safety, all Poweramp levelers can be equipped with light communication, iDock Controls, and vehicle restraints, which help prevent unexpected trailer departure from the loading dock. Safety barriers are also available to prevent forklift trucks from driving over the dock edge.

## CONSTRUCTION

The LMP Series is a reliable, yet economic mechanical leveler that has been value engineered to accommodate basic applications.

### LMP SERIES

### COMMON OPTIONS

- 3-wheel offset forklift protection
- Below dock endload control
- Dock alert light communication system
- Dock lights
- Extended lip sizes (18" and 20")
- Foam insulated deck
- Safety yellow full-range toe guards
- Vehicle restraint
- Weather seal (brush or rubber)



W194N11481 McCormick Dr. | Germantown, WI 53022  
poweramp.com | sales@poweramp.com  
800-643-5424



poweramp.com

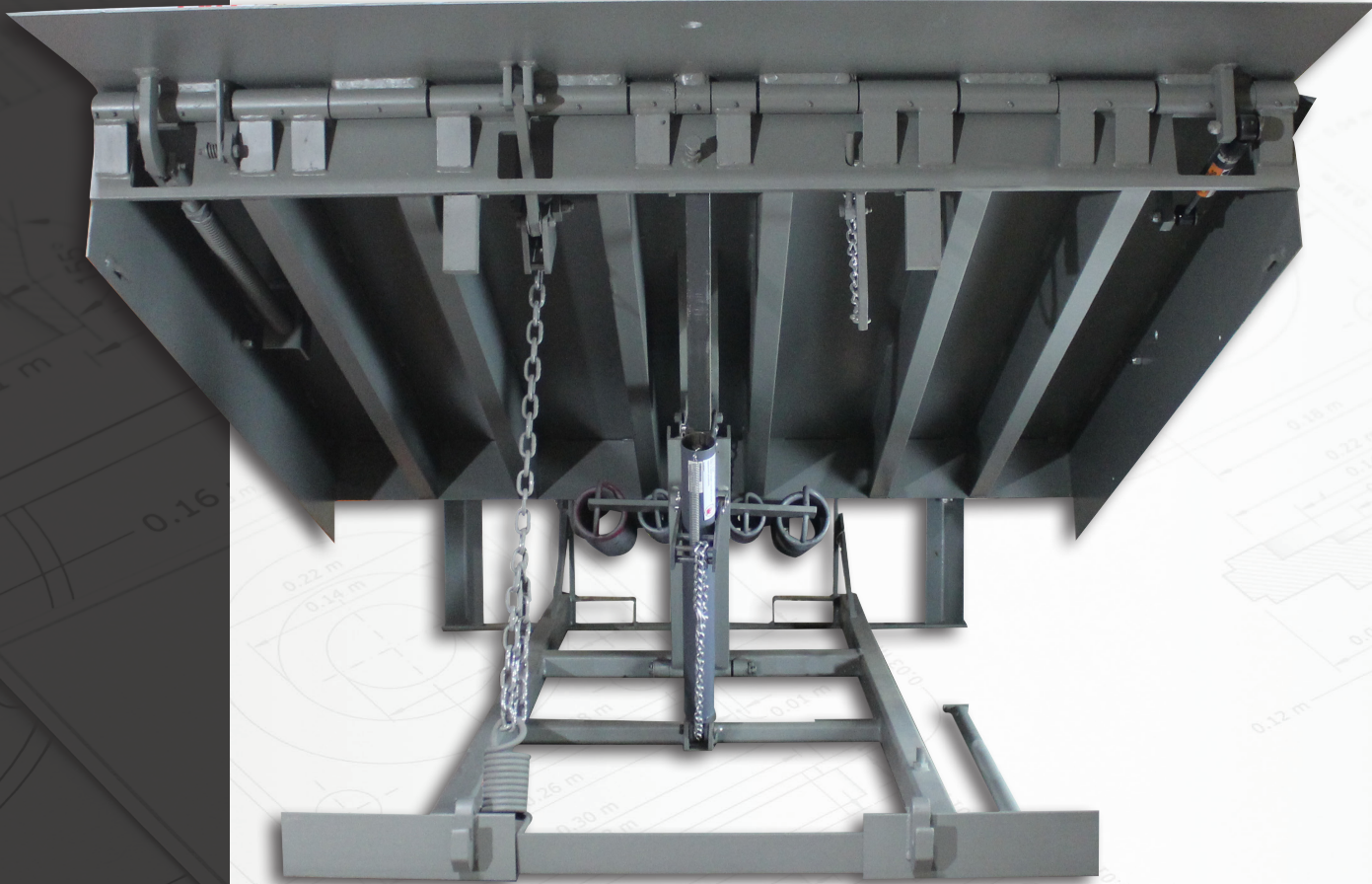
*Designed, Engineered, and Manufactured in the U.S.A.*  
© 2024 Systems, LLC/Poweramp  
Consistent with our policy of continuing product improvement, we reserve the right to change product specifications without notice or obligation.

LMP 09/2024

A Division of Systems, LLC  
**POWERAMP**  
Premium Loading Dock Systems



# HM Series Mechanical Dock Leveler



**30K - 50K**  
CIR

**6' - 7'**  
WIDTH

**6' - 10'**  
LENGTH

## FEATURES

- 11-tooth, hold-down/float assembly
- Cam control counter balance assembly
- Grease fittings
- Lip drive positive lip extension
- Lip-supporting service strut
- Multiple position safety stop
- Working-range toe guards
- Yieldable lip plate
- Below dock end loading capability
- CleanSweep frame design
- Four-sided box construction deck assembly
- Lockout/tagout maintenance strut
- Night locks/cross traffic support
- Designed and manufactured in the USA

Connect online  
with

**myQ**  
Enterprise

\* HM Series 6'x8' 35,000 CIR shown.

# HM Series Mechanical Dock Leveler

30K - 50K  
CIR

6' - 7'  
WIDTH

6' - 10'  
LENGTH

## OPERATION

The Poweramp HM Series Leveler is manually operated simply by pulling the release chain to raise the leveler and automatically extend the lip. The attendant walks the platform down onto the trailer bed. The standard lip is 16", with an operating range of 12" above and below dock level. The platform is designed to compensate for canted truck beds up to 4" and remain flush with the dock floor.

## SAFETY FEATURES

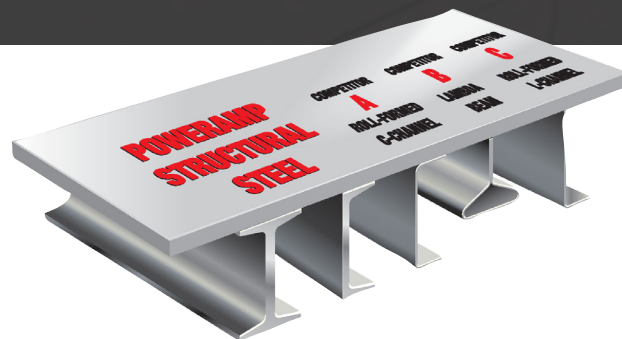
- Dual pivoting cross traffic legs for multi position safety in the event of early departure
- Built in lockout/tagout maintenance inspection strut
- Working range toe guards close off sides even at the highest position
- Lip keepers for cross traffic support and automatic night lock security against theft



Float barrel hold down is designed to operate under extreme float conditions common with "air ride" suspension trailers.

## VEHICLE RESTRAINTS & ACCESSORIES

For enhanced safety, we recommend all Poweramp levelers be equipped with light communication, iDock Controls, and vehicle restraints, which help prevent unexpected trailer departure from the loading dock.



## CONSTRUCTION

The HM Series is designed for heavy-duty applications. All Poweramp levelers are built with a durable four-sided box construction. The use of structural steel C channels or I beams create substantially more deck support than other levelers.

### HM SERIES COMMON OPTIONS

- 3-wheel offset forklift protection
- Dock alert light communication system
- Dock lights
- Extended lip sizes (18" and 20")
- Foam insulated deck
- Safety yellow full-range toe guards
- Vehicle restraint
- Weather seal (brush or rubber)



W194N11481 McCormick Dr. | Germantown, WI 53022  
poweramp.com | sales@poweramp.com  
800-643-5424



poweramp.com

*Designed, Engineered, and Manufactured in the U.S.A.*  
© 2024 Systems, LLC/Poweramp  
Consistent with our policy of continuing product improvement, we reserve the right to change product specifications without notice or obligation.

HM 04/2025

A Division of Systems, LLC  
**POWERAMP**  
Premium Loading Dock Systems