

# S E R I E S 1000

## FOAM DOCK SEAL With Fixed Head Pad

The Series 1000 Dock Seal saves energy dollars while providing airtight protection to the loading dock area during material handling operations. The Series 1000 is most effective when servicing uniform vehicles at a dock having common parameters.

The vehicle positioned at the dock compresses the resilient foam pads, eliminating the gap between the facility and the vehicle body. This separation of interior and exterior environments allows for a safe loading dock area while ensuring employee comfort and efficiency.

The air-tight barrier that Fairborn dock seals provide regulates the facility's atmosphere to be free from air-borne contaminants, insects, and foul weather; while enhancing building security.

To ensure maximum durability, the Series 1000 is available in our superior performance materials. Fairborn created the first certified performance fabrics designed solely for the construction of dock seals and shelters. Our exclusive materials meet or exceed the most demanding requirements and have proven to outperform any fabric in today's dock shelter market.

**Fairborn**<sup>®</sup>

FAIRBORN USA INC.

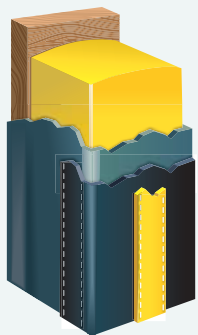




### Head Pad Options...

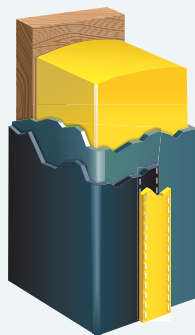
- ① **A Weighted Drop Curtain** enables the servicing of an occasional low vehicle.
- ② **Touch and Hold Attachments** allow the drop curtain to be stored out of the way when not in use.
- ③ **Underside Reinforcement** reduces the potential for damage caused by contact from a high load.
- ④ **Reinforced Wear Face** increases the durability of the entire contact area.
- ⑤ **Dyna-Armor Pleats** provide maximum protection at wear points.

### Optional Side Pad Fabric Construction...



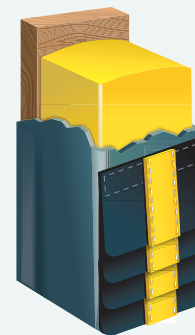
**Reinforced Face**

This option further reinforces the entire contact surface of the side pad for greater durability.



**Reinforced Inside**

Reinforcing the portion of the side pad that is exposed to the door opening, reduces the potential for damage caused by contact from a wide load.

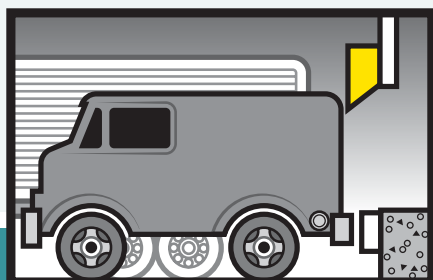


**Dyna-Armor Pleats**

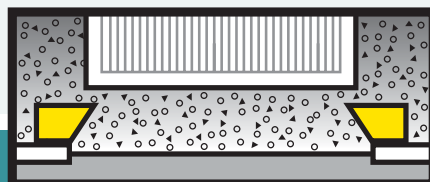
A pleat construction the full length of the side pad provides for maximum protection. This option is available in 4", 8" or 16" exposure.

### A few of the many Series 1000 design options to tailor suit your requirements...

A **Beveled Head Pad** will allow for the accommodation of a wide range of vehicle and door height variations.



**Beveled Side Pads** allow standard vehicle widths to be serviced at wider openings. The bevel profile provides for a "wiper" action, allowing for greater accessibility to the rear of the vehicle, while reducing pressure onto the facility wall.



**Tapered Units** provide a uniform seal when accommodating an inclined or declined drive approach. This option reduces the potential of overcompression.

